

**A wide range of silencers for vacuum pumps and compressors.**

Compressed gas silencers

- Noise reduction available : from 15 dBA to 40 dBA
- Guaranteed minimum energy consumption (low pressure drop)

**Effective and competitive products :**

- Adaptability  
New or existing facilities
- Customization  
to suit your needs
- Availability  
Short delivery times
- Technical know-how  
Acoustics, thermal, hydraulic
- Integrated R&D  
Technological innovation
- Integrated aero/acoustic  
laboratory  
Guaranteed performance



# Compressed Gas

---

## APPLICATION

A wide range of standard silencers for vacuum pumps and suppressers, when the operational pressure inside the silencers is below 0.5 bar.

---

## DESCRIPTION

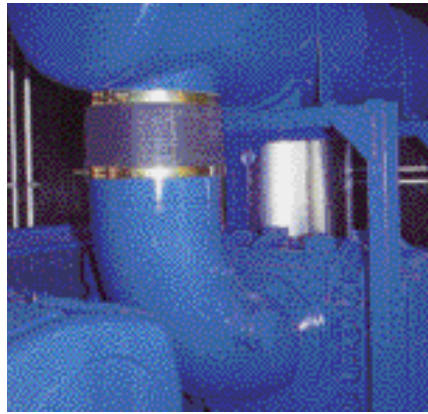
Our silencers are fully welded and are made of S235JR carbon steel, with interior and exterior painted for protection. The soundproofing material is rock wool. The nominal diameter of the inlet and outlet tubing (DN) as well as the noise reduction class (15,25,30,40) determines the name of the silencers. E.g.: SR 30 DN 50.



---

## DOCUMENTS AND CONTROL

This type of product is not under pressure, and is therefore not subject to tests or specific controls. A dimensional and visual inspection control report is available. In the event of pressure above 0.5 bar, refer to the Specific SR .



---

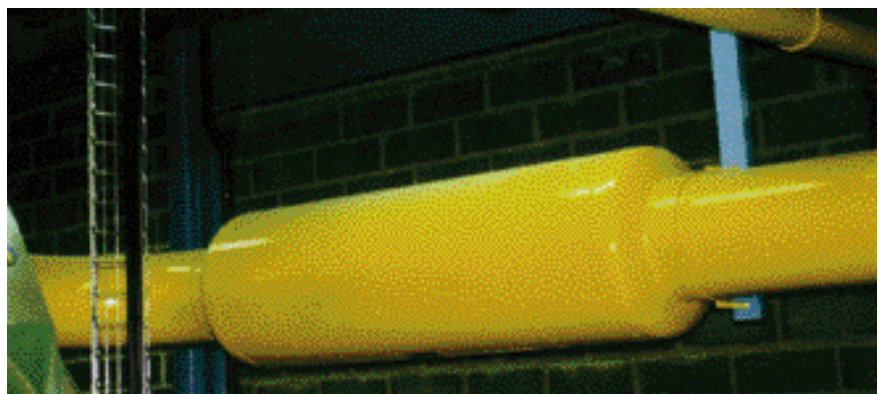
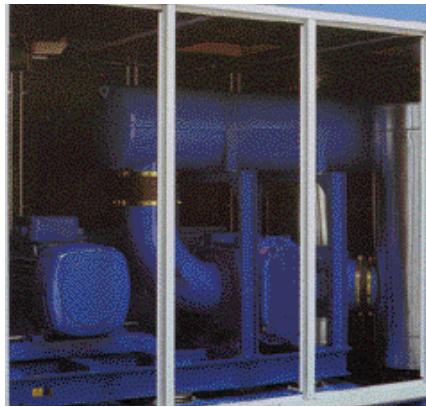
## SELECTION CRITERIA

After selecting the silencer according to the noise reduction requirement, use the corresponding chart to determine the nominal diameter according to the flow rate in m<sup>3</sup>/h and the impedance loss in Pascals (abacas for air temperature 20 °C).

---

## RECOMMANDATIONS

It is essential to separate the silencer inlet by flexible tubing to eliminate the transmission of vibrations.



---

## OPTIONS

- Special external protection (plating)
- Individual finishing colour
- 304L or 316L stainless steel
- Back flanges, joints, bolts
- Dedicated supports
- Oil separator
- Exterior insulation
- Water separator (see SR40S silencer)
- Soundproofing materials: glass fibre, high temperature polyurethane foam, 434 stainless steel wool, feeder polyurethane foam

---

## ACOUSTIC PERFORMANCES

The acoustic performance of the silencers has been optimised by our R&D department. Our silencers are based on two noise reduction principles :

- Absorption device (SR15 and SR25)
- Reactive and wave displacement device together with an absorption device (SR30 and SR 40).

Featuring very low pressure drops, our silencers are capable of a wide range of noise reduction from 15 to 40 dB (A).

---

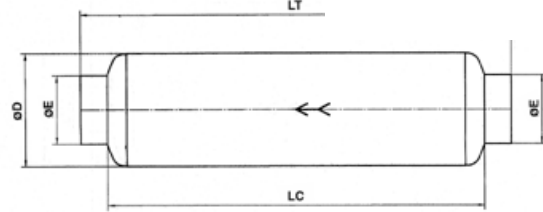
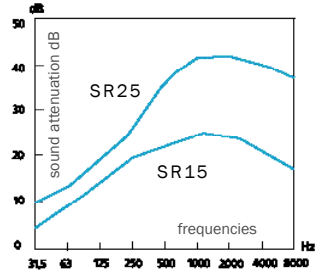
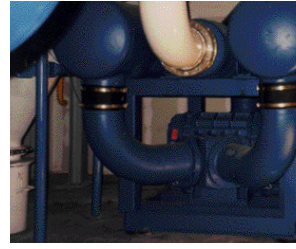
## INSTALLATION

Our silencers can be placed in a horizontal or vertical position depending on the space available and the layout of the piping. We can advise you on the optimum lay out.

## SR 15-25

DIMENSIONS

<b>DN</b>	50	65	80	100	125	150	175	200	225	250	300	350
<b>Qv m<sup>3</sup>/h</b>	280	440	620	990	1520	2230	3000	3890	4880	6090	8680	10400
<b>PC SR15 Pa</b>	145	125	108	113	109	113	111	109	107	110	107	83
<b>PC SR25 Pa</b>	1414	1223	1058	1105	1067	1107	1082	1066	1048	1070	1049	813
<b>øD mm</b>	154	154	204	204	254	304	304	354	404	454	504	555
<b>LC mm</b>	338	400	507	607	760	966	1006	1173	1348	1510	1710	2015
<b>LT mm</b>	456	556	651	767	876	1086	1206	1345	1534	1720	1900	2164
<b>MASSE SR15 kg</b>	4	4	8	9	16	26	27	36	49	57	80	109
<b>MASSE SR25 kg</b>	4	4	9	11	18	29	30	42	56	67	92	125
<b>øDE mm</b>	60	76	89	114	140	168	194	220	246	274	324	356

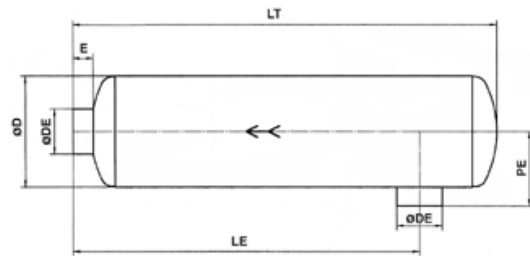
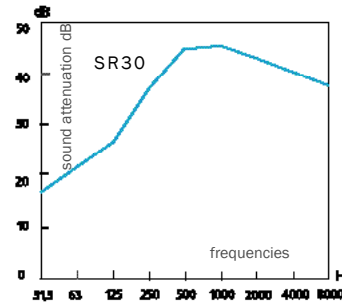


Dimensions are given in mm, weights in kg. Dimensions are indicated without flange. Please add 4 mm for each welded flange. Tolerances lengths inferior to 4000 mm : plus or minus 4 mm.

## SR30

DIMENSIONS

<b>DN</b>	50	65	80	100	125	150	175	200	225	250	300	350
<b>Qv m<sup>3</sup>/h</b>	190	300	410	660	1020	1480	2000	2590	3260	4060	5720	6930
<b>PC Pa</b>	1019	889	724	769	752	763	752	740	732	745	713	565
<b>øD mm</b>	184	204	254	304	404	455	505	555	605	655	755	855
<b>PE mm</b>	165	175	210	230	300	330	330	375	405	450	475	550
<b>LE mm</b>	440	590	710	880	1025	1250	1440	1670	1880	2260	2500	2850
<b>E mm</b>	70	70	70	70	100	100	110	110	110	110	110	120
<b>LT mm</b>	560	740	900	1100	1250	1540	1750	2050	2300	2650	2980	3350
<b>MASSE kg</b>	7	11	17	27	43	72	90	118	160	198	286	376
<b>øDE mm</b>	60	76	89	114	140	168	194	220	246	274	324	356

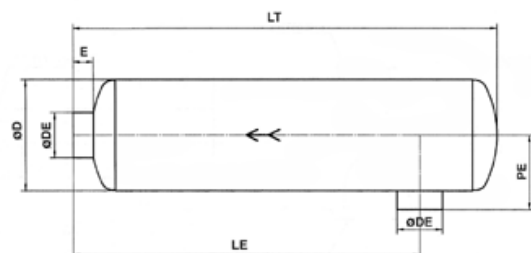
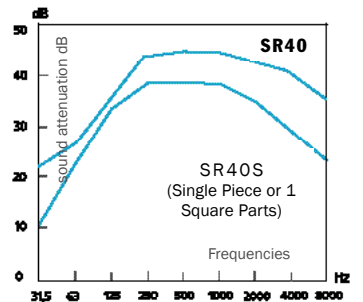
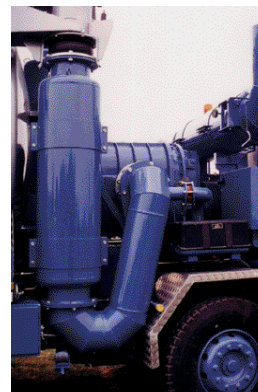


Dimensions are given in mm, weights in kg. Dimensions are indicated without flange. Please add 4 mm for each welded flange. Tolerances lengths inferior to 4000 mm : plus or minus 4 mm.

## SR40

DIMENSIONS

<b>DN</b>	50	65	80	100	125	150	175	200	225	250	300	350
<b>Qv m<sup>3</sup>/h</b>	240	380	530	860	1270	1860	2600	3330	4230	5240	7430	9000
<b>PC Pa</b>	3533	3101	2629	2835	2533	2620	2763	2657	2677	2695	2613	2070
<b>øD mm</b>	305	355	405	455	455	608	608	658	708	758	808	908
<b>PE mm</b>	222	248	272	298	328	404	414	439	464	489	523	574
<b>LE mm</b>	760	970	1080	1260	1550	1795	1945	2305	2430	2700	3060	3113
<b>E mm</b>	70	70	70	70	100	100	110	110	110	110	110	120
<b>LT mm</b>	890	1100	1255	1445	1760	2070	2220	2610	2810	3135	3520	3515
<b>MASSE kg</b>	23	36	47	60	76	145	175	225	260	340	415	583
<b>øDE mm</b>	60	76	89	114	140	168	194	220	246	274	324	356



Dimensions are given in mm, weights in kg. Dimensions are indicated without flange. Please add 4 mm for each welded flange. Tolerances lengths inferior to 4000 mm : plus or minus 4 mm.

# SR40S SINGLE PIECE OR IN 2 SQUARE PARTS

## WATER AND OIL SEPARATION

The "SR40S" water separator silencers is designed for the flow of liquid or water injection vacuum pumps and have acoustical performances identical to the SR 40. Depending on the installation, they can be provided in 2 versions :  
- Single piece, or 2 part

Oil separation silencers are designed to reduce the noise of escaping compressed air containing oil particles: drop hammer, cylinder outflows, and pneumatic presses. Once connected to an oil storage tray, our silencers are self-cleaning and require only periodic maintenance. Also available in galvanised steel or stainless steel, internal parts can be dismantled.

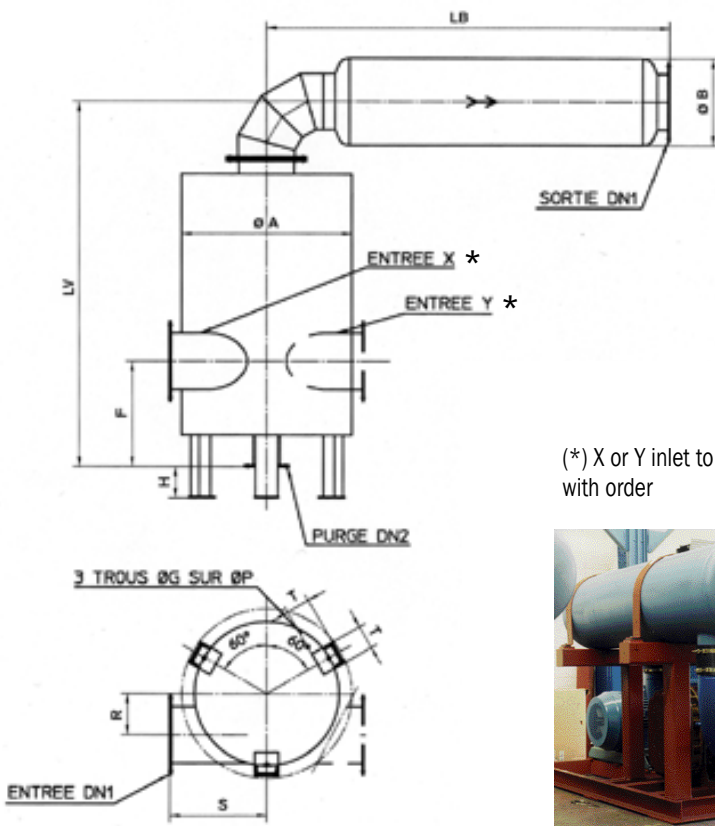
DN	50	65	80	100	125	150	175	200	225	250	300	350	400	450	500
Qv m³/h	140	220	310	500	760	1110	1500	1940	2440	3050	4390	5200	6800	8550	10600
PC Pa	1683	1456	1260	1342	1270	1307	1288	1263	1247	1278	1277	967	970	957	965
LA mm	470	520	570	620	620	770	770	820	870	920	970	1070	1120	1170	1270
LB mm	154	154	204	204	254	304	304	354	404	454	504	555	655	758	858
DN1 mm	50	65	80	100	125	150	175	200	225	250	300	350	400	450	500
DN2 mm	*20	*25	*32	*40	50	65	80	100	100	125	125	150	175	200	225
F mm	360	400	465	460	540	585	605	705	705	730	805	770	820	920	900
LP	300	350	400	450	450	600	600	650	700	750	800	900	950	1000	1100
H**	140	150	170	190	210	240	270	320	320	370	370	430	480	530	600
LA	310	390	485	595	715	910	995	1145	1315	1485	1645	1945	2150	2425	2635
LT	1060	1230	1395	1585	1895	2190	2325	2675	2930	3230	3530	3700	4090	4570	4850
LG mm	16	16	16	18	18	18	18	20	20	20	20	24	24	24	24
R	110	140	145	160	145	210	195	210	220	230	230	260	260	260	285
S	235	335	360	385	385	460	460	485	510	535	560	610	635	660	710
T	60	60	60	80	80	80	80	100	100	100	100	150	150	150	150
MASSE kg	55	70	85	110	120	190	230	290	340	410	480	610	770	960	1150
MASSE kg	61	78	94	122	136	212	260	320	380	460	550	670	850	1050	1260
LB	535	655	770	920	1070	1315	1480	1650	1875	2105	2340	2645	2995	3320	3615
LV	940	1050	1140	1260	1490	1625	1720	1945	2075	2250	2445	2360	2615	2890	3030

DIMENSIONS

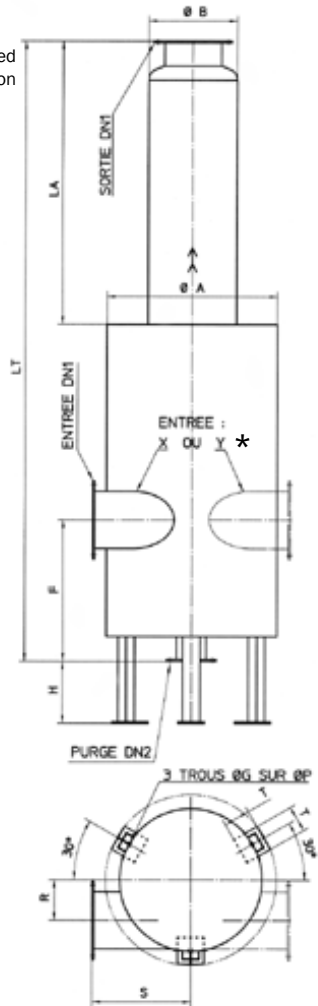
■ S40S monobloc    
 ■ S40S 2 éléments d'équerre    
 (\*\*) Modifiable à la demande

Dimensions are given in mm, weights in kg. Dimensions are indicated without flange. Please add 4 mm for each welded flange. Tolerances on lengths inferior to 4000 mm : plus or minus 4 mm.

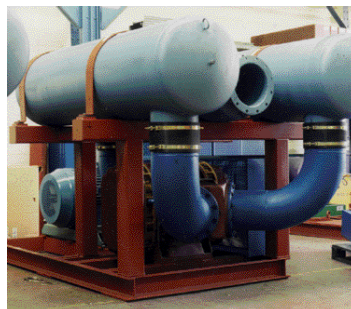
SR40S in 2 square parts



SR40S single piece



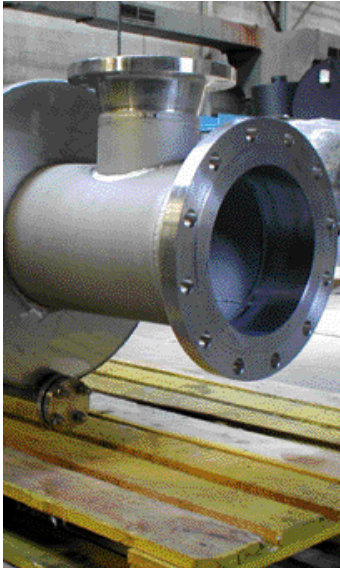
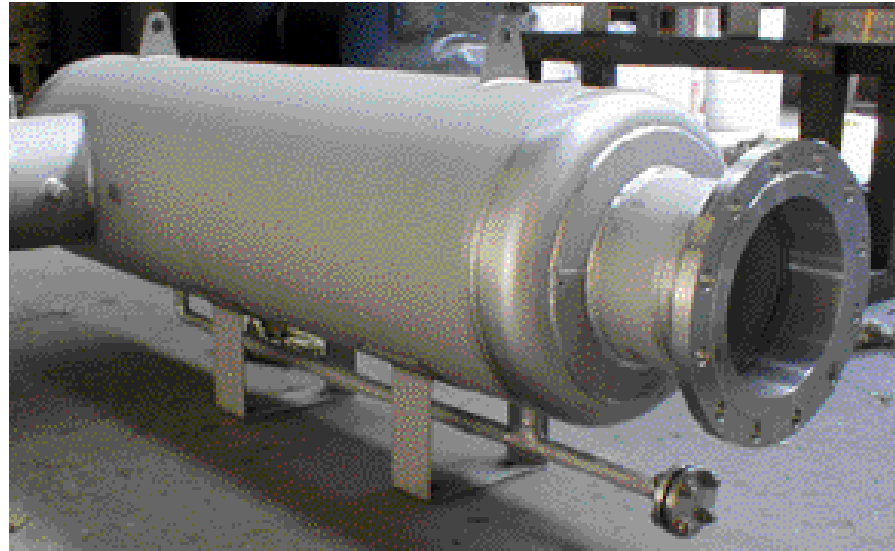
(\*) X or Y inlet to indicate with order



## DISCHARGE SILENCERS

If the service pressure is above 0.5 bar, the silencer is subject to Pressure Equipment Directive 97/23 EC. In this case, you need to determine the risk category to which the machinery is subject and apply the corresponding regulatory requirements, at the design, construction, control and labelling levels.

EC labelling, which confirm to the product conformity in relation to the directive requirements, is mandatory.



## PRESSURE EQUIPMENTS DIRECTIVE (PED)

