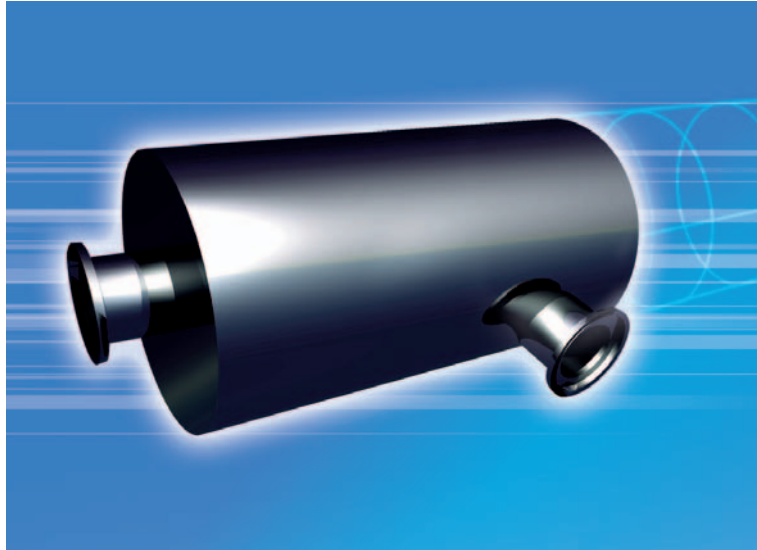




Applications

- Power ;
- Industry (test beds facilities) ;
- Railway ;
- Military ;
- Marine...



EXHAUST SILENCER

SM50P

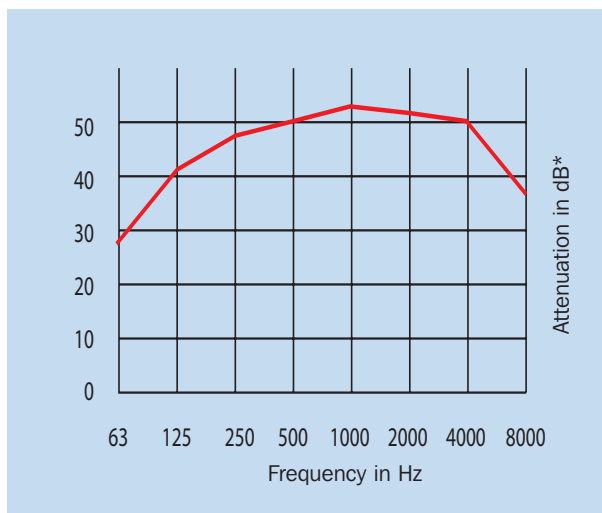
Also Available SM15P-SM25P/SM30P/SM40P/SMC

Our SM silencers are designed to reduce the exhaust noise of internal combustion engines of all types (petrol, diesel or gas...).

Our research and development organisation has optimised the acoustical design of these SM silencers. Our product type SM50P is based on a multi-volume reactive arrangement linked to an absorptive device.

As soon as the silencer type has been selected according to the noise reduction range, please refer to table on following page for details.

Guaranteed acoustic performance from 48 dB(A)



Silencer nominal diameter choice

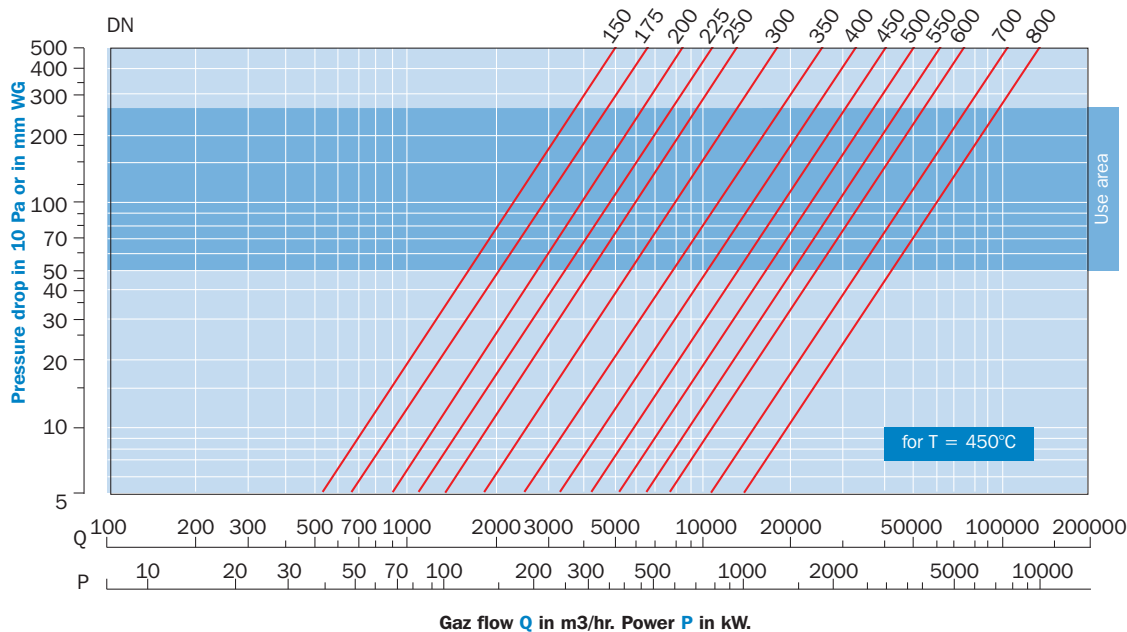


TABLE OF DIMENSIONS

DN	150	175	200	225	250	300	350	400	450	500	550	600	700	800
DE (mm)	168	194	220	246	274	324	356	406	457	508	557	609	710	812
D (mm)	658	658	708	758	800	908	958	1008	1008	1110	1200	1308	1510	1608
LT (mm)	2550	2800	3000	3200	3400	4300	4500	4800	5130	5300	5505	5800	6300	6600
LE (mm)	2285	2505	2630	2775	2955	3915	4070	4330	4640	4810	4860	5255	5585	5785
E (mm)	110	110	110	110	110	120	120	120	130	130	140	150	150	170
PE (mm)	415	440	465	490	525	575	600	620	630	685	755	760	905	975
Masse (kg)	260	280	330	380	430	690	750	860	965	1110	1450	1780	2230	2540

- Sizes (dimensions) are given in mm, weights in Kg.
- Dimensions exclude flanges. Add 5 mm for each flange.
- Tolerances on lengths less than 4000 mm :
+ - 3 mm. Greater than 4000 mm : + - 4 mm
- * Mean attenuation range. Value in dB(A) is given for dominant sound spectrum at 125 Hz.

